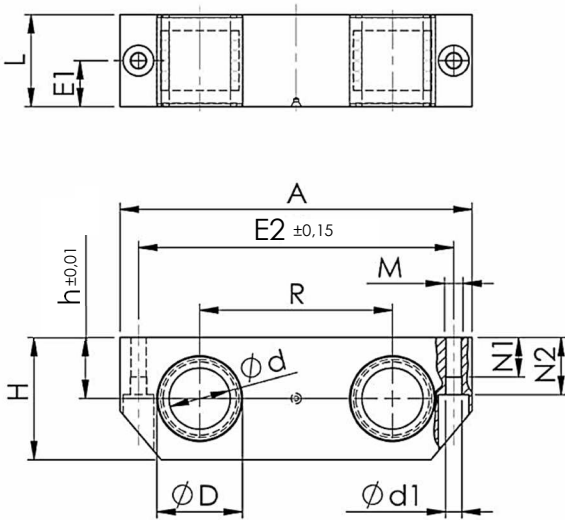


Lineargehäuse - Kompakt KDCG

Duo geschlossen
für Linearkugellager EXC/E & KH



| Teile-Nr. | Abmessungen in mm | | | | | | | | | | | | | Gewicht |
|-----------|-------------------|----|----|------|-----|----|-----|----|-----|----|------|------|-----|---------|
| KDCG | d | D | H | h | A | L | R | E1 | E2 | N1 | N2 | d1 | M | kg |
| KDCG-12 | 12 | 19 | 30 | 15,0 | 80 | 28 | 40 | 14 | 69 | 11 | 14,0 | 4,3 | M5 | 0,15 |
| KDCG-16 | 16 | 24 | 35 | 17,5 | 96 | 30 | 52 | 15 | 86 | 11 | 16,5 | 4,3 | M5 | 0,2 |
| KDCG-20 | 20 | 28 | 40 | 20,0 | 115 | 30 | 63 | 15 | 103 | 13 | 19,0 | 5,3 | M6 | 0,25 |
| KDCG-25 | 25 | 35 | 50 | 25,0 | 136 | 40 | 75 | 20 | 123 | 18 | 24,0 | 6,6 | M8 | 0,50 |
| KDCG-30 | 30 | 40 | 56 | 28,0 | 146 | 50 | 80 | 25 | 133 | 18 | 27,0 | 6,6 | M8 | 0,70 |
| KDCG-40 | 40 | 52 | 70 | 35,0 | 184 | 60 | 97 | 30 | 166 | 22 | 34,0 | 8,4 | M10 | 1,30 |
| KDCG-50 | 50 | 62 | 80 | 40,0 | 210 | 70 | 107 | 35 | 189 | 26 | 39,0 | 10,5 | M12 | 1,75 |

- Lieferung ohne Linearkugellager
- Gewichtsangabe ohne Linearkugellager
- Befestigungsschrauben DIN 912 - 8.8, Federring DIN 7980
- Bestellung Linearset siehe Bestellschlüssel