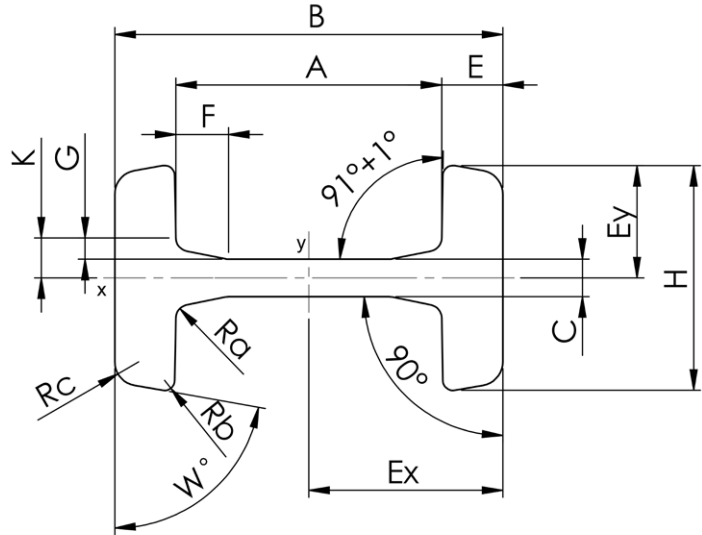
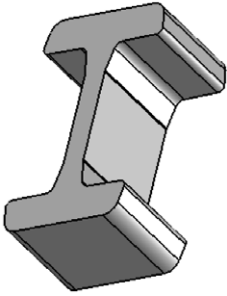


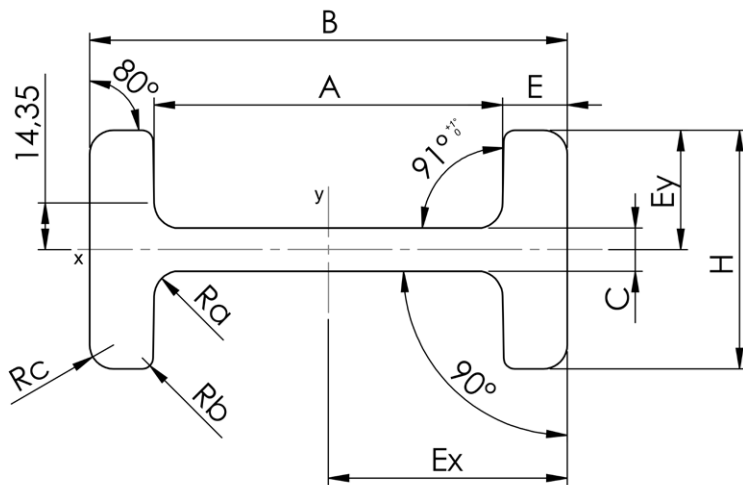
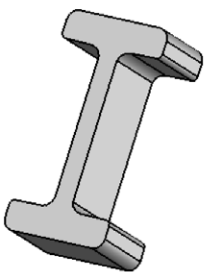
# I-Profile

## I-Profile Standard nb warmgewalzt

- Oberflächenbehandlungen  
(grundieren, verzinken, usw. ..)
- Bearbeitungen  
(bohren, fräsen, Gewinde schneiden  
nach Kundenzeichnungen bzw. Kundenangaben )



I-Profil Standard...	A	B	C ±0,5	H	E ±0,5	F	G	K ±0,5	Ra	Rb	Rc	Ex	Ey	W°	Gewicht in kg/m	Wx in cm³	Wy in cm³	Ix in cm⁴	Iy in cm⁴
HT3018-nb	70,0 <sup>+1</sup>	98,0	9	65 <sup>±1</sup>	14,0	15	3	11,5	4 <sup>-1</sup>	3 <sup>±1</sup>	7 <sup>-3</sup>	49,00	32,50	80°	19,40	70,26	17,73	344,29	57,63
HT3019-nb	77,9 <sup>+1</sup>	113,9	11	66 <sup>±1</sup>	18,0	15	3	14,5	4 <sup>-1</sup>	3 <sup>±1</sup>	7 <sup>-3</sup>	56,95	33,00	80°	25,30	104,92	23,27	597,54	76,79
HT3020-nb	88,6 <sup>+1</sup>	129,6	12	81 <sup>±1,25</sup>	20,5	15	3	15,0	4 <sup>-1</sup>	3 <sup>±1</sup>	7 <sup>-3</sup>	64,80	40,50	80°	34,05	160,07	39,97	1037,22	161,89
HT3100-nb	108,4 <sup>±0,5</sup>	152,4	14	83 <sup>±1</sup>	22,0	20	4	15,0	5	3	7 <sup>-3</sup>	76,20	41,50	78°	40,54	219,17	44,46	1670,08	184,51
HT3353-nb	123,8 <sup>±0,5</sup>	175,0	15	90 <sup>±1,3</sup>	25,6	20	5	20,0	5	4	8 <sup>-4</sup>	87,50	45,00	85°	51,40	322,07	64,71	2818,15	291,19



I-Profil Standard...	A -0,8	B	C ±0,8	H +1,6	E ±0,8	Ra	Rb	Rc -3	Ex	Ey	Gewicht in kg/m	Wx in cm³	Wy in cm³	Ix in cm⁴	Iy in cm⁴
HT2912-nb	102,28	140,20	12,7	69,9	18,96	7,9	3,2	7	70,01	34,95	31,17	156,62	30,56	1097,89	106,81