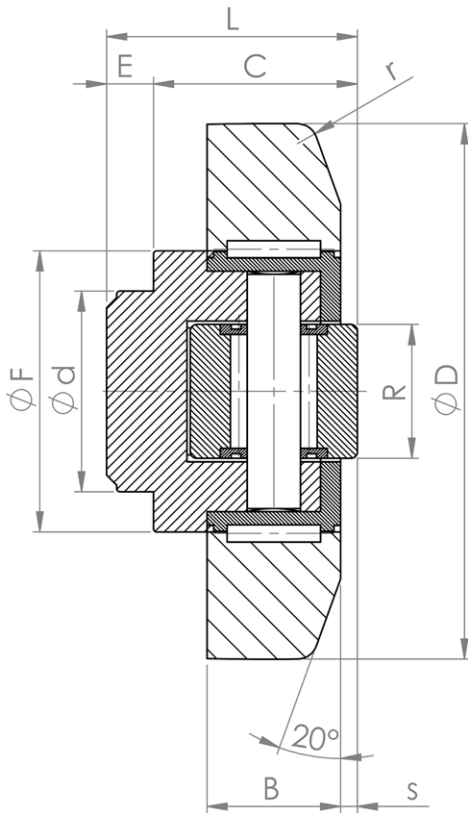


fest



für I - Profile Standard nb

nachschmierbar ab $\varnothing D = 77,7$ mm

RS = Lippendichtung
Z = Labyrinthdichtung

Für I-Profil Standard nb

Bezeichnung	$\varnothing d_0$ -0,05	$\varnothing D$	L	B	C	E	$\varnothing F$	R	r	s	Gewicht in kg	Profil I-Standard...	Tragzahlen in kN			
													dynamisch		statisch	
													C_{radial}	$C_{\text{A axial}}$	$C_{\text{O radial}}$	$C_{\text{OK axial}}$
I-4HT055-RS	35	70,1	40,5	23	32,5	8,0	48	22	4,0	2,5	0,80	HT3018-nb	45,5	51,0	13	14
I-4HT057-Z	40	77,7	44,0	23	34,0	10,0	54	24	4,0	3,0	0,90	HT3019-nb	48,0	56,8	18	18
I-4HT058-Z	45	88,9	57,0	30	44,0	13,0	59	26	4,0	3,5	1,62	HT3020-nb	68,0	68,0	23	23
I-4HT059-101,2-Z	50	101,2	46,0	28	33,0	13,0	67	30	5,0	2,5	1,80	HT2912-nb	73,0	82,0	25	27
I-4HT060-Z	55	108,5	53,0	31	39,0	14,0	71	34	5,0	2,5	2,30	HT3100-nb	81,0	95,0	31	36
I-4HT062-123,0-Z	60	123,0	60,0	37	47,0	13,0	80	40	5,0	5,0	3,70	HT3353-nb	110,0	132,0	43	50